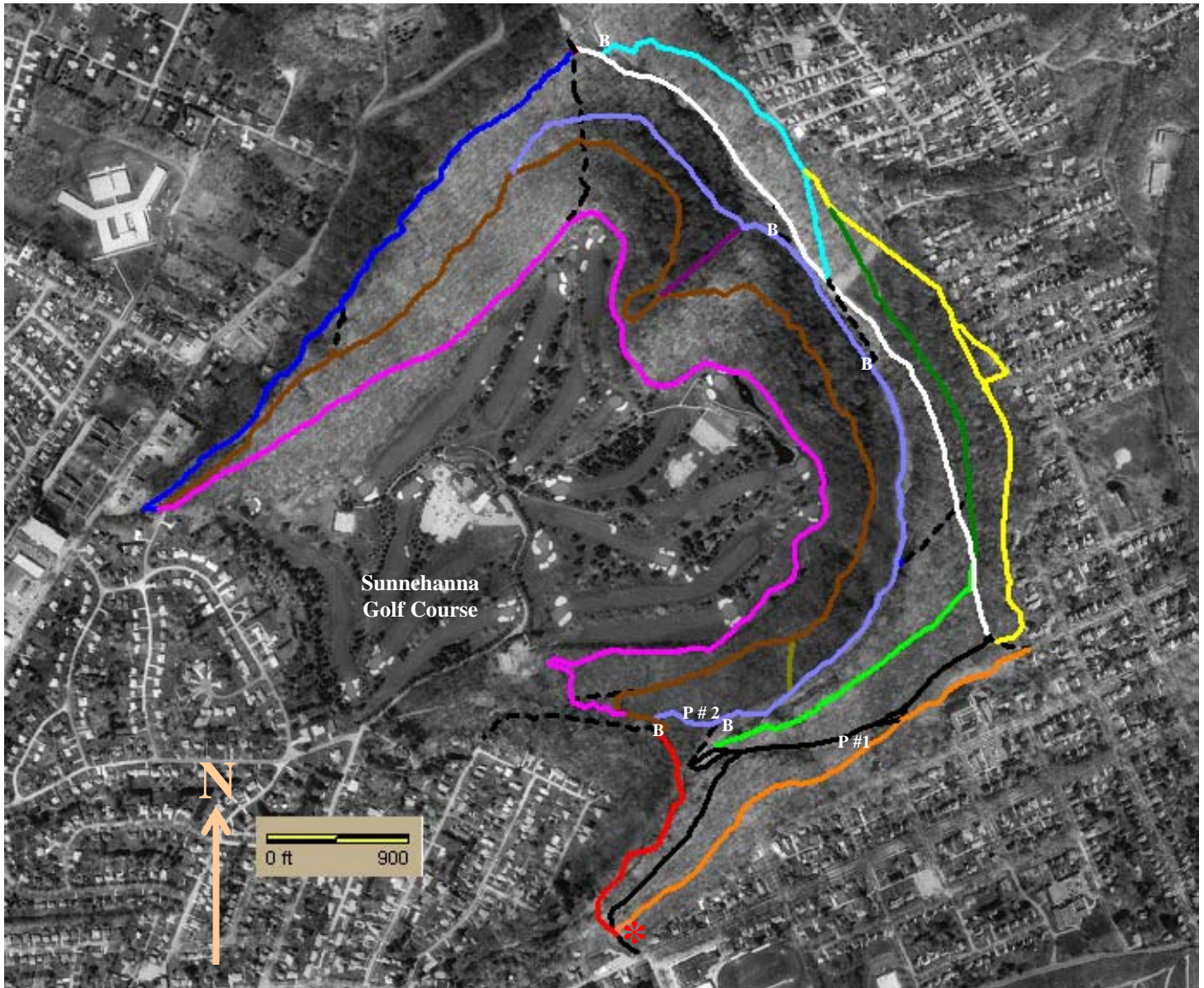




*A park can be a place of beauty forever*

# TRAIL MAP



## LEGEND

**Bridle Path:** 9036 ft.  
**Brownstown Trail:** 2,249 ft.  
**Crystal Trail:** 3,757 ft.  
**Caddy Trail:** 665 ft.  
**Ecology Trail:** 1,616 ft.  
**Elk Run Trail:** 10,120 ft.  
**Julia Path:** 4,378 ft.  
**Luzerne Path:** 3,235 ft.  
**Bridge:** B

**Norton Path:** 4,679 ft.  
**Old Log Trail:** 342 ft.  
**Salt Lick Trail:** 2,491 ft.  
**Tall Timber Trail:** 10,260 ft.  
**Tioga Path:** 3015 ft.  
**Whispering Trail:** 2,105 ft.  
**Unnamed Trails:** - - -  
**Picnic Pavilion:** P  
**Ranger Station:** \*

Version: June 2010

Trail data collected by Jared Hays.  
 GPS: Magellan Platinum & DeLorme  
 Earthmate PN-20

Software: DeLorme Topo USA 6.0  
 Data compiled by Bruce Robart

Bicycles allowed only on Luzerne Path,  
 Norton Path, and Julia Path.

Ranger Station  
 Phone: 814-536-1674